



KÖSTER at your service – worldwide.



Floor systems

Self-leveling Underlayment  
KÖSTER SL Premium



// Technical Data

Technical Data	KÖSTER SL Premium
Compressive Strength (28 days)	approx. 45 N / mm <sup>2</sup>
Bending tensile strength (28 days)	approx. 10 N / mm <sup>2</sup>
Shrinkage	< 0,5 mm / m
Wear-resistance BCA	AR 0,5*
Adhesion to concrete	up to 4 N / mm <sup>2</sup>
Pot life	approx. 20 Min. (+ 20 °C)
Layer thickness (for mineral substrates)	2 - 15 mm, in depressions up to 30 mm
Trafficable	approx. 24 hours** (soft tires)
Substrate preparation	according to need by shot blasting, grinding or broom cleaning
Primer	KÖSTER SL Primer: diffusion-open primer, single layer application
Application Preparation for subsequent resin coatings	gauging rake, spiked roller sanding sufficient (for KÖSTER synthetic resin coatings)

\* best possible approximation  
\*\* depending on temperature



// Contact us

KÖSTER BAUCHEMIE AG  
Dieselstraße 1-10 · 26607 Aurich  
Tel.: +49 4941 9709 0  
E-Mail: info@koster.eu  
[www.koster.eu](http://www.koster.eu)

Follow us on social media:



Fast, safe, durable

## // Application



1 Substrate preparation



2 Prime with KÖSTER SL Primer



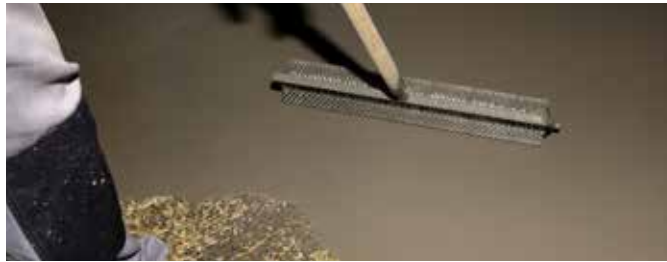
3 Use an electrical paddle mixer and mix intensively for three minutes



4 Distribute the material in the desired layer thickness directly after mixing



5 While working larger areas use a KÖSTER Gauging Rake to distribute the material



6 Lastly a KÖSTER Spiked Roller is used for de-airing



KÖSTER SL Premium  
The result: a fast-setting  
underlayment that provides  
a smooth, level surface

## KÖSTER SL Premium

### Important features at a glance:

- Quick and easy application for a strong and multifunctional leveling layer
- High compressive strength 45 N/mm<sup>2</sup>
- Excellent flowability
- NEW: Two-phase shrinkage compensation – inconjunction with KÖSTER VAP I 06 Primer also for use on synthetic resin floors
- 90% less shrinkage than common underlayments
- Easy, lump-free mixing
- Exceptionally homogeneous when hardening – no soft layer on the surface due to settlement!
- Designed for an easy and safe application ensuring
- high application quality
- Provides a smooth, level surface ready to receive subsequent flooring systems
- Hardens crack free despite varying layer thicknesses
- Resistant to foot traffic after approx. 3 - 4 hours\*
- Can be tiled over after approx. 4 - 6 hours\*
- Application of Parquet, carpet after approx. 24 hours\*
- Application of synthetic flooring after approx. 24 hours\*
- Excellent adhesion to substrate
- No more uncertainty regarding the absorbency of the substrate and no more (unsafe) prewatering necessary

\*depending on temperature