

The logo for KÖSTER, featuring the word in a bold, blue, sans-serif font. The letter 'O' is stylized with a blue outline and a white center, and the letter 'E' has a blue outline and a white center. The background of the entire page is a close-up photograph of a grey, textured waterproofing membrane with a grid-like pattern of raised rectangular cells.

Waterproofing Membranes

KÖSTER TPO TF for Tunnels and Foundations

Issued: 05/2026





The KÖSTER TPO TF is a thermoplastic polyolefin PE-based reinforced membrane for the waterproofing of tunnels and foundations

KÖSTER TPO TF Membranes

For over 35 years, KÖSTER has been manufacturing waterproofing membranes in Aurich, Germany. These waterproofing membranes have proven their effectiveness over time in multiple structural waterproofing applications.

KÖSTER TPO TF membranes were specially designed for the waterproofing of all types of underground structures including basements, foundations, and tunnels.

Product name	KÖSTER TPO TF
Type	FPO / TPO – PE base
Construction	Double layer FPO-PE with central reinforcement in between layers
Reinforcement	Yes – glass fleece
Signal layer	Yes – silver top signal layer for visual damage control
Thicknesses available	1.5 mm (1.75 meters wide) 2.0 mm (2.10 meters wide, available upon special request) 2.5 mm (2.10 meters wide, available upon special request)
Fields of application	<p>Tunnel construction</p> <ul style="list-style-type: none"> • Cut-and-cover construction • Drained mining tunnels • Pressurized mining tunnels • Cross passages in segmental linings <p>Underground structures</p> <ul style="list-style-type: none"> • Foundations and basements • Watertight compartment systems • Ground-Contact Floors on Moist Substrates • Podium decks
Application technique	Overlap the sheets and weld seams with hot air welding equipment Single or double seam welding
Advantages	<ul style="list-style-type: none"> High elongation and tear resistance High crack-bridging ability Superior mechanical impact resistance Resistant to permanent contact with water – does not rot over time Seams homogeneously welded (not glued or bonded) No chemical activation of the seam needed during application Signal layer for visual damage control Immediate waterproofing effect Fast and clean installation Free of volatile plasticizers and other VOC's



A superior performing membrane for wider waterproofing fields of application.



Welding KÖSTER TPO TF

Automatic Welding



Details and pile heads



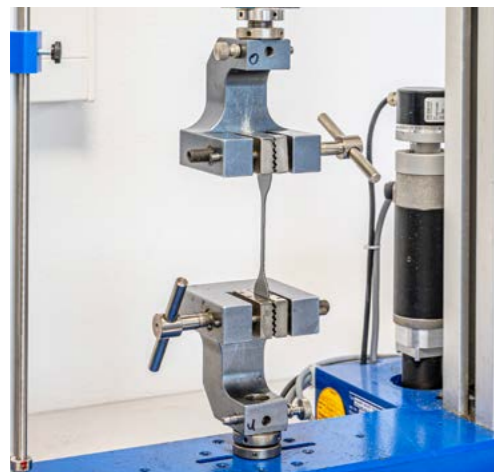
To ensure a watertight installation and long service life, the KÖSTER TPO TF membrane seams are welded homogeneously with hot air, using single or double seam welding machines.

To achieve full waterproofing, manual welding with the help of a pressure roller is carried out on detail areas and pile heads.

KÖSTER TPO TF membranes can be welded within a wide temperature window between +400 °C to +600 °C, depending on the local environmental conditions.

Hot air welding in comparison to fully bonding or cold applied adhesives provides a faster and cleaner installation process with an immediate waterproofing effect, without relying on curing times or surface preparation. The welded seams offer consistent, high mechanical strength and can be easily inspected and tested on site, ensuring reliable quality.

KÖSTER TPO TF Performance



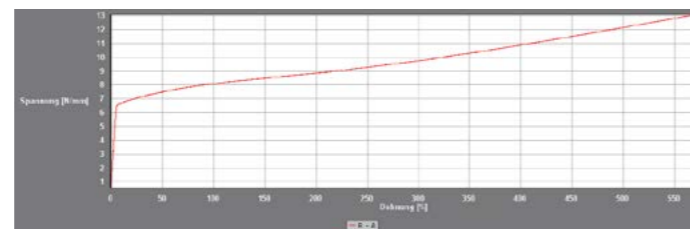
To ensure performance integrity, the KÖSTER TPO TF membrane is designed and tested in accordance with mechanical, hydraulic, and thermal requirements. These requirements include elongation capability, tear and impact resistance, membrane rigidity, and water-tightness.

Our membranes also provide excellent chemical resistance and durability. In addition, KÖSTER TPO TF is equipped with a silver signal layer for visual damage control. The waterproofing membrane is capable of deforming without rupture or deterioration during its life expectancy.

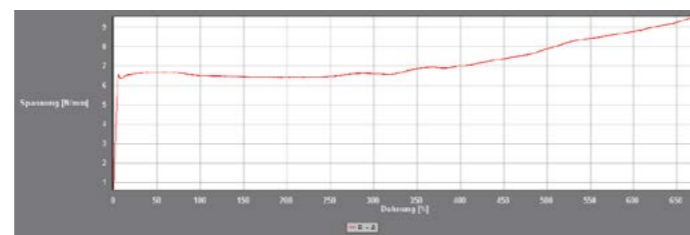
Below we can see the results of the elongation test, confirming the high flexibility and mechanical performance of the KÖSTER TPO TF membrane.



Machine Direction



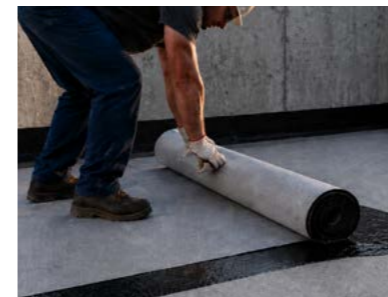
Cross Direction



Advantages of the hot air welding method



In comparison to a fully bonded membrane, the hot air welding method and loose laid application of the KÖSTER TPO TF is not sensitive to the substrate conditions, irregular surfaces, complex details, and protrusions. Using the hot air welding method leads to a secure and testable tightness of the system. If desired, the welding seams can be welded using a twin welding seam that can be tested on site for tightness.



In comparison to cold applied adhesives, the method of application of the KÖSTER TPO TF does not involve curing times, temperature limitations, moisture sensitivity, or limited breathability with the risk of trapped moisture.

Because the KÖSTER TPO TF has secure and robust, testable welding seams there is no concern about a possible effectiveness of the bond between pre-applied membranes and the fresh concrete. The result is fully testable and fully predictable. There is no dependence on the adhesion / bonding reaction between membrane and the freshly poured concrete.

Waterproofing solution

The differentiation of the application methods for waterproofing membranes is based on the project design, excavation system, required water control system, soil and substrate conditions surrounding the structure, and its intended use.

Water Control Systems: Drainage Solutions and Barrier Techniques

Drainage System	Waterproofing against damp soil and percolating water using a single layer membrane. The waterproofing membrane protects the concrete while channeling water into the drainage system.
Barrier System	Waterproofing against hydrostatic pressure using a single layer membrane and a compartment system composed of waterbars, injection flanges, and control ports. The membrane ensures comprehensive protection of the concrete structure from moisture and chemical exposure, with options for integrated monitoring and injection systems for backup protection.



Membrane thickness selection

Moisture and water ingress	1.5 mm
Hydrostatic pressure 0 m - 10 m	1.5 mm
Hydrostatic pressure 10 m - 20 m	2.0 mm

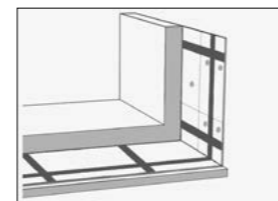
Tunnels

Tunnel waterproofing systems need to perform under difficult construction conditions, heavy structural loads, cost restrictions, and exposure over time.

Tunnels



Basements



Basements and Foundations

Basement waterproofing systems must be designed to remain in constant ground contact, under variable groundwater pressure and site construction limitations, and ensure long-term protection against moisture infiltration and structural loads. For this reason, different system solutions are applied depending on the project parameters.

KÖSTER TPO TF in Construction Waterproofing

Basements and tunnels are subjected to varying water exposure, pressure conditions, and biological factors. Complete waterproofing of all basement and tunnel components in ground contact is required to prevent water ingress and protect against chemical attack.

Tunnels



Vehicular Tunnels



Underground Railways



Pressurized water tunnels



Rock protection gallery



Shafts



Interconnecting passages

Underground structures



Commercial basements



Sub-level parking areas



Metro stations



Residential basements



Containment facilities



Leisure centers



Archives



Warehouses



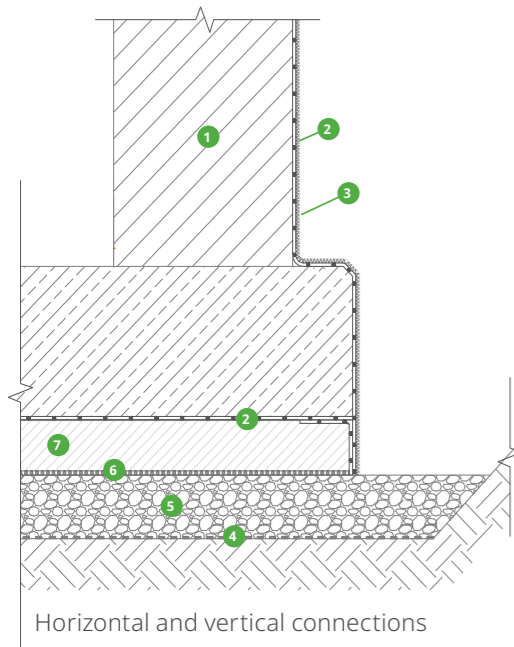
Utility Rooms

Application Methods

The application of our KÖSTER TPO TF is carried out depending on the project and the location where it will be installed. However, it is important to consider some important characteristics. For applications where the substrate consists of shotcrete, the surface must be smoothed before the geomembrane is installed. Tension in the membrane should be minimized, and all reinforcement and waterstop anchors should be fully embedded during concrete pouring.

The KÖSTER Method constitutes a series of application steps ensuring a secure installation of the KÖSTER TPO TF, while guaranteeing a better connection between the horizontal and vertical surfaces.

A strip with a minimum width of 20 cm is securely fastened as a transition to the inside of the formwork, and the cleanliness layer poured half way up the membrane. The strip is then folded over the slab and the horizontal waterproofing welded to it. Then the structural slab can be poured. When the formwork is removed and the walls built, the vertical waterproofing can be easily welded to it.



Vertical surfaces

The vertical waterproofing membranes are mechanically fastened along the upper edge and secured with a finishing profile to avoid water infiltration behind the membrane.

Horizontal surfaces

KÖSTER TPO TF Membranes are placed over the horizontal surface and the overlaps are connected by hot air welding, which creates a homogenous, watertight, and durable connection.

- 1 Structural concrete wall
- 2 KÖSTER TPO TF
- 3 KÖSTER SD Protection and Drainage Sheet 3-250
- 4 Geotextile separation layer
- 5 Filter bed with gravel (optional)
- 6 PE Foil
- 7 Cleanliness layer

The following sections present the application methods in different scenarios. For further details, please consult our KÖSTER TPO TF Method Statement.

Tunnels

Mined tunnel

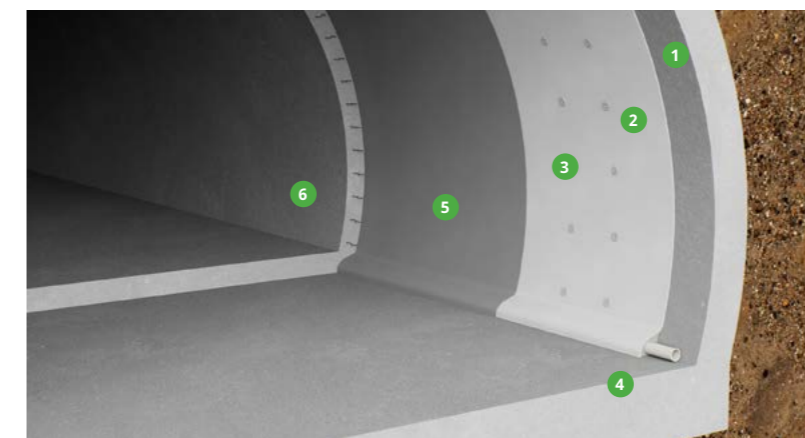


Drainage Umbrella System

Description

Umbrella tunnels are waterproofed only in the vault area and are not designed to resist water pressure. Any infiltrating or temporary water must be collected and discharged through a drainage installed at the bottom of the tunnel.

Application



- 1 Substrate
- 2 Geotextile protection layer
- 3 PE Discs
- 4 Drainage system
- 5 KÖSTER TPO TF
- 6 Concrete

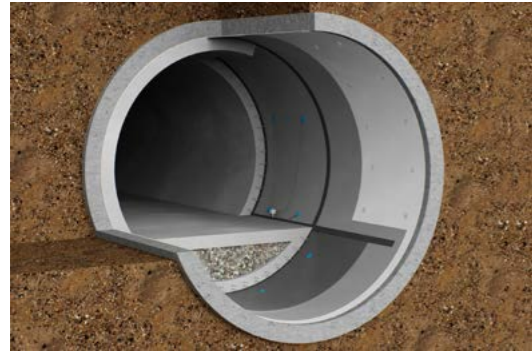
Substrate is prepared, Geotextile is applied and after attached with the PE discs.

The substrate is prepared. A geotextile layer is installed and fixed in place using polyethylene (PE) discs. The KÖSTER TPO TF membrane is then attached by welding it to the discs, with all overlaps sealed using hot-air welding to ensure continuous waterproofing. The installation also includes a drainage system to prevent water ingress and direct it safely to outlets.

KÖSTER Technology	KOSTER TPO TF 2.0
Type of construction	TBM Shield TBM Drill and Blast
Waterproofing system	Drainage layer + loose-laid KÖSTER TPO TF membrane
Installation method	Pre-installed waterproofing systems: Loose-laid prefabricated KÖSTER TPO TF membrane systems.
Performance	Durability: High Crack-bridging: High Water vapor tightness: High Chemical resistance: Very High Concrete Protection: High
Advantages	Full waterproofing arch Drainage system Seamless waterproofing layer
Typical application fields	Railway tunnels and road tunnels with complex geology
Repair method	Local injection in the event of leakages on determined segments

Tunnels

Mined tunnel



Hydrostatic membrane barrier
Compartment System

Description

In tunnels designed as a hydrostatic barrier, the waterproofing forms a closed system around the entire tunnel cross-section. The structure is protected against permanent groundwater pressure. Drainage is normally not part of the concept, so all joints, penetrations, and connections must be watertight and pressure-resistant.

Application

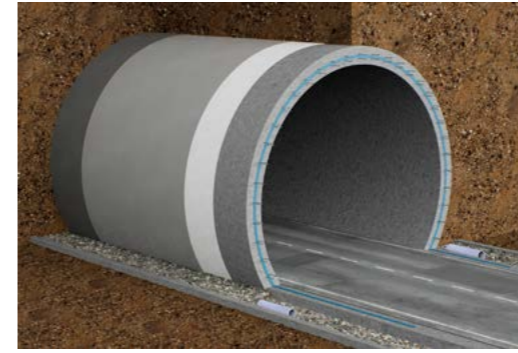


- 1 Substrate
- 2 Geotextile protection layer
- 3 PE Discs
- 4 KÖSTER TPO TF
- 5 Waterbar
- 6 Injection flange
- 7 Injection hose
- 8 Control Port
- 9 Concrete

The substrate is prepared. The geotextile layer is fixed with PE discs. The KÖSTER TPO TF is welded to the discs, with overlaps sealed by hot-air welding. To localize potential leaks the system is divided into independent compartments using waterstops welded to the membrane. Injection valves and control ports are installed to permit inspection and targeted repair where needed.

KÖSTER Technology	KÖSTER TPO TF 2.0
Type of construction	TBM Shield TBM Drill and blast
Waterproofing system	Loose-laid KÖSTER TPO TF membrane + Compartment system
Typical application fields	Railway tunnels and road tunnels in complex geology
Performance	Durability: High Crack-bridging: High Water vapor tightness: High Chemical resistance: Very High Concrete Protection: High
Installation method	Loose laid membrane system made of KÖSTER TPO TF with compartments and integrated injection back-up. Membrane application in one layer
Advantages	High waterproofing security Built-in redundant protection by compartment injection
Repair method	Injection of leaking compartments through injection ports inside of structure

Cut and cover

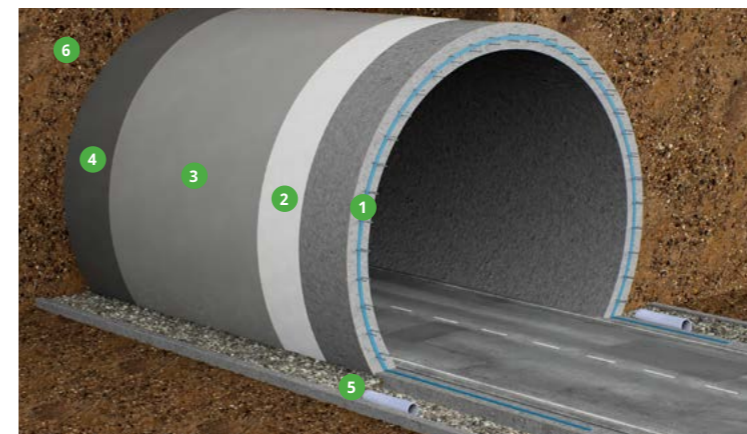


Drainage System

Description

Cut-and-cover tunnels with a drainage system are designed to relieve water pressure around the structure. Water is collected by drainage layers and led to drainage pipes for controlled discharge. The waterproofing protects the structure, while the drainage prevents the build-up of hydrostatic pressure.

Application



- 1 Reinforced Concrete
- 2 Geotextile protection layer
- 3 KÖSTER TPO TF
- 4 KÖSTER SD Protection and Drainage Sheet
- 5 Drainage system
- 6 Backfill

The reinforced concrete tunnel is constructed. A geotextile layer is installed followed by the waterproofing membrane with overlaps sealed by hot-air welding. The KÖSTER TPO TF membranes are positioned so that seepage can run off into a drainage system.

KÖSTER Technology	KÖSTER TPO TF 2.0
Type of construction	Cut-and-cover
Waterproofing system	Mechanically fastened KÖSTER TPO TF membrane + Drainage layer + back-fill
Typical application fields	Road tunnels, road galleries, metro stations, railway tunnels.
Performance	Durability: High Crack-bridging: High Water vapor tightness: High Chemical resistance: Very High Concrete Protection: Very High
Installation method	Mechanically fastened membrane system made of KÖSTER TPO TF. Membrane application in one layer + drainage and protection sheet
Advantages	Positive side waterproofing with drainage system Seamless waterproofing layer
Repair method	Injection in the event of leakages in the affected areas

Basements and Foundations

External waterproofing



Description

With external waterproofing, the waterproofing layer is applied to the outside of the basement walls and slab before backfilling. It protects the structure against ground moisture, seepage and groundwater, depending on the selected system. Particular care is required at joints, pipe penetrations, and wall/floor transitions.

KÖSTER Technology	KOSTER TPO TF 1.5 KOSTER TPO TF 2.0
Type of construction	External waterproofing Sandwiched waterproofing
Waterproofing system	Drainage layer + loose-laid KÖSTER TPO TF membrane
Typical application fields	Commercial and residential buildings, storage areas, metro stations
Performance	Durability: High Crack-bridging: High Water vapor tightness: High Chemical resistance: Very High Concrete Protection: High
Installation method	Loose-laid mechanically fastened membrane system: Loose-laid prefabricated KÖSTER TPO TF membrane systems.
Advantages	It offers excellent durability, allows for simple and rapid construction, requires no additional wall protection, and is a cost-efficient solution.
Repair method	Local injection in the event of leakages in the affected areas

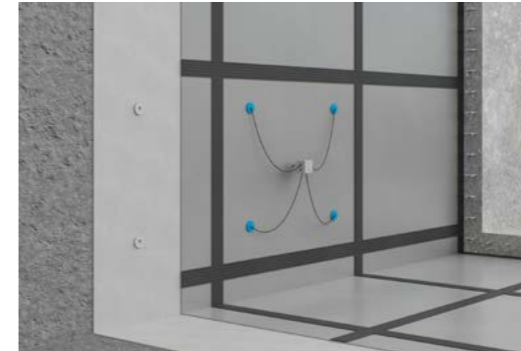
Application



- 1 Substrate
- 2 Geotextile protection layer
- 3 KÖSTER TPO TF
- 4 KÖSTER SD Protection and Drainage Sheet

The membranes are hung down from the top edge and mechanically fixed with fasteners or a bar for mechanical fixation. The bottom of the membranes are welded to the exposed horizontal waterproofing.

Compartment System

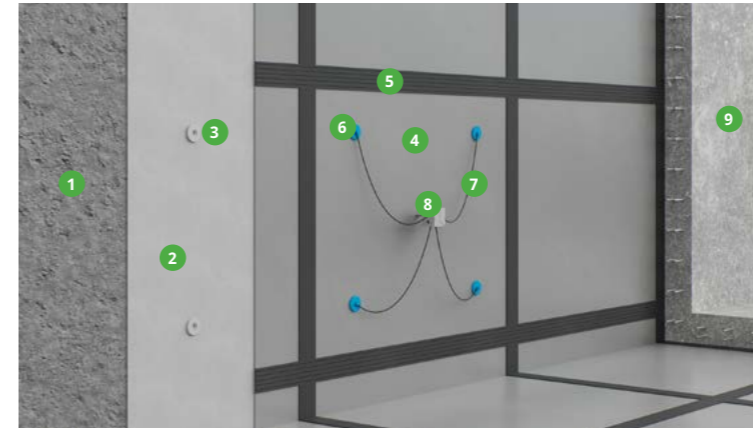


Description

A compartment system divides the waterproofing into separate watertight sections. If a leakage occurs, water migration is limited to one defined area, making the defect easier to locate and repair. This system is commonly used for basements or underground structures exposed to pressurized water.

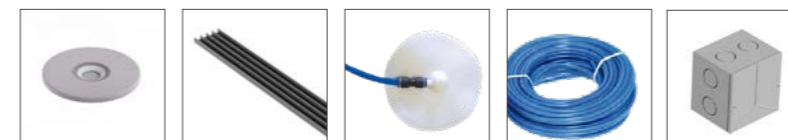
KÖSTER Technology	KOSTER TPO TF 1.5 KOSTER TPO TF 2.0
Type of construction	Compartment System
Waterproofing system	Mechanically fixated KÖSTER TPO TF membrane and controlled injection segments
Typical application fields	Large underground engineering projects, in which controlled sections are required for leak detection.
Performance	Durability: High Crack-bridging: High Water vapor tightness: High Chemical resistance: Very High Concrete Protection: High
Installation method	Loose laid membrane system made of KÖSTER TPO TF with compartments and integrated injection back-up. Membrane application in one layer.
Advantages	High waterproofing security. Built-in redundant protection by compartment injection. No excavation required to repair localized leaks.
Repair method	Injection of leaking compartments through injection ports inside of structure.

Application



- 1 Substrate
- 2 Geotextile protection layer
- 3 PE Discs
- 4 KÖSTER TPO TF
- 5 Waterbar
- 6 Injection flange
- 7 Injection hose
- 8 Control Port
- 9 Concrete

The substrate is prepared. A geotextile layer is fixed with PE discs. The KÖSTER TPO TF is welded to the discs, with overlaps sealed by hot-air welding: To limit local leaks the system is divided into independent compartments using waterstops welded to the membrane. Injection valves and control ports are installed to permit inspection and targeted repair if needed.



Repair System

When localized damage to a waterproofing system leads to water ingress, the affected areas must be properly sealed. In tunnels and underground structures, direct access to the membrane is often limited, making injection methods the most practical repair approach.

Repairs can be performed using localized injection. In this method, low-viscosity resins are injected directly into the point of water ingress to seal specific defects.

In compartments systems, injection is carried out through the pre-installed valves and control ports. This method repairs the waterproofing system by sealing the area between the KÖSTER TPO TF membrane and the concrete.

Control System

Weld samples must be taken daily on site to determine the correct welding parameters. If conditions change, the settings must be checked and readjusted if necessary.

In addition, the following inspections shall be carried out:

Visual Inspection	After welding, all seams are visually inspected, especially at connections.
Manual Testing	Once the welded seams have completely cooled, they are mechanically tested with a test needle.
Vacuum Bell Test	A soap solution is applied to the seam edges and subsequently the vacuum bell is pressed over the area. In case of leaks, bubbling is observed.
Compressed air test – double welding	Double seam welding machines create two welds at the same time, creating an enclosed channel between them. The weld is tested by compressing air into the void created by the two welds. In case of leaks, the pressure drops.



Radon retardant

Radon is a colorless, odorless and tasteless gas, which makes it very difficult to detect. Possible entry points of Radon in buildings include areas in ground contact and foundations with potential cracks or potential points which the gas could enter.



KÖSTER TPO TF is a waterproof membrane designed to retard radon ingress into the structure. A radon diffusion coefficient was determined according to the method A of the ISO/TS 11665-13. Concentrations on both sides of tested samples were measured continuously by radon detectors (TSR-4 of the TERA System) and current mode ionization chambers.

Exposure to radon represents a health hazard and is addressed with the amendment to the Radiation Protection Act of May 12, 2017 to protect against radon in buildings. The specified reference value should not exceed 100 becquerels per cubic meter of room air, otherwise suitable protective measures must be taken.

86
Rn
Radon
222

EXPERT LABORATORY OÜ 124 Thákova 207/2, Praha 6, 166 29 Phone: +420 248 511 777 E-mail: jirasek@iv..cvut.cz	No. of copies: 2 Copy No.: 1 No. of pages: 3 Page No.: 1 No. of annexes: 0 No. of annex pages: 0
Order No.: 862803A217	
TEST REPORT No. 124026/2026 upon the test: Determination of the radon diffusion coefficient of KÖSTER TPO TF carried out in accordance with the ISO/TS 11665-13	
Client's name and address: KÖSTER BALACHEMIE AG Dierstraße 1-10 D-26607 Aurich Germany	
Date of issue: 18.4.2025	
Approved by: prof. Ing. Martin Jirasek, CSc. Technical head of OÜ 124 laboratory	
<small>This report can only be reproduced in its entirety, in part only with a written consent of the issuing laboratory. The test results refer exclusively to the subject of the test (test sample).</small>	



We are there for you – worldwide.



// Contact us

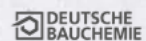
KÖSTER BAUCHEMIE AG
Dieselstraße 1-10
D-26607 Aurich
Tel.: +49 4941 9709 0
E-Mail: info@koester.eu

www.koester.eu

Follow us on social media:



KÖSTER
Waterproofing Systems



Always adhere to the specifications in the respective Technical Data Sheets.